

THERMOMATIC® EC HOME

Easy-to-use mixing valve automation with many possibilities – for one or two heating circuits



Actuator and connection centre with control panel/room sensor



Wireless room sensor

Thermomatic EC Home has been developed from our renowned Thermomatic concept, in which simplicity and user-friendliness are the keywords.

With the basic package, with the easiest setting, you have a control that just responds to the room temperature. This is the most economical, with savings of up to 24%, according to tests of the Thermomatic.

It is, however, also possible, using the same unit, to regulate according to the outdoor temperature. You can run both independently, but also combine them in a number of ways so that you meet every installation's requirements for comfort and use. See the reverse for a more detailed description.

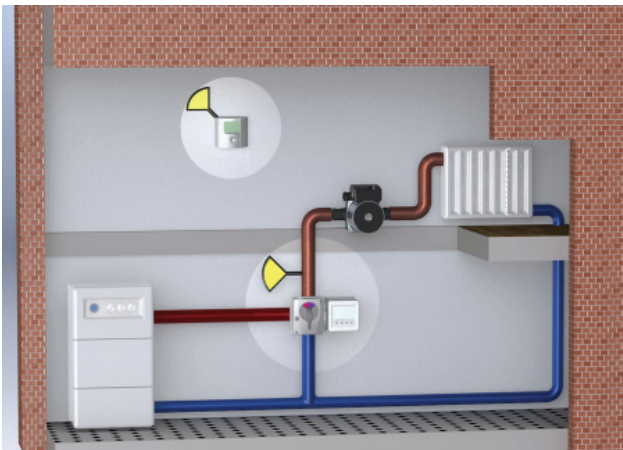
All settings are entered in the digital control panel. This also acts as the room sensor. You can also use wireless room sensor, or passive room sensor, which would be suitable for e.g. rental apartments where you want to separate the control panel and temperature sensing.

Thermomatic EC Home distinguishes itself by being flexible in its installation, easy to use and providing quick financial benefits.

These options are available:

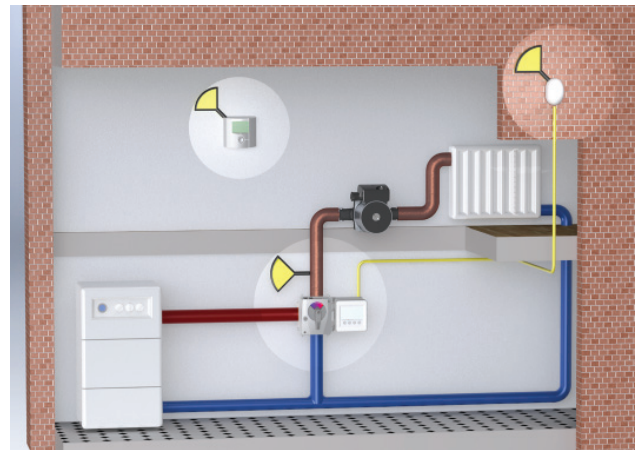
- Connection to outdoor sensor.
- Controlling two circuits (2K) from the same control panel.
- Using day and night temperatures.
- Using external control, e.g. a GSM module, to control temperature and/or receive an alarm if temperature is too high or too low.
- Control the circulation pump and additional heating through a relay box.
- Limit access and viewing data for unauthorised persons.
- Read history of indoor, outdoor and supply temperatures.

Examples of control options that Thermomatic EC Home offers.



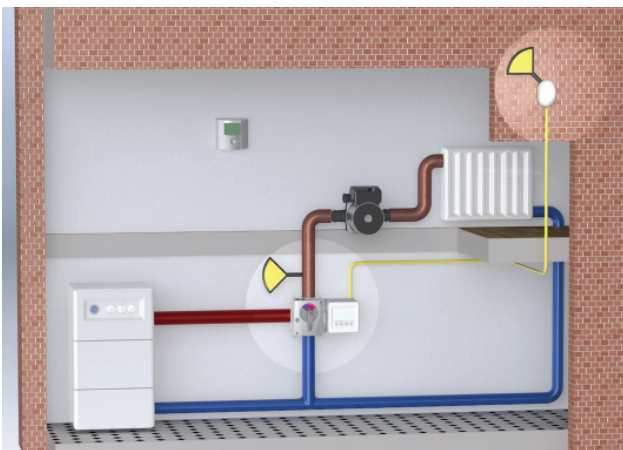
Room control

This gives the most efficient and easiest control function in a single family dwelling or premises with uniform heating needs. Easy installation/operation and optimum heating economy.



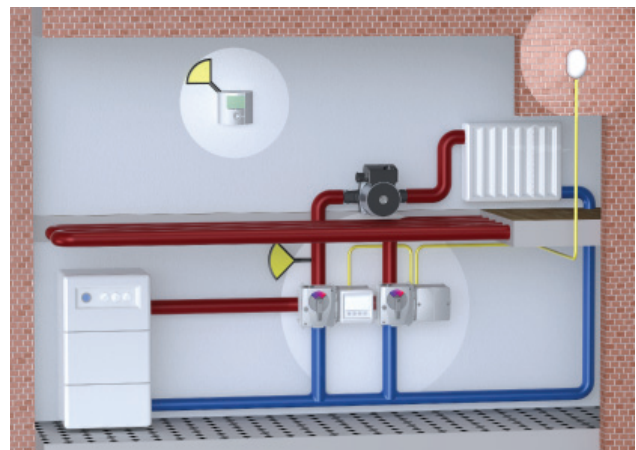
Room and outdoor control

Room/outdoor in a family house or premises with uniform heating needs. Higher heating comfort is achieved with outdoor sensor-controlled maximum and minimum limits. Outdoor/room for regulation in multi-occupancy buildings. The outdoor sensor normally controls the heating according to the set control curve. The room sensor prevents unnecessary overheating.



Outdoor control

For control in multi-occupancy buildings. The outdoor sensor controls the heating according to the set control curve.



Control of two circuits (2K)

To control dual circuits from a single control panel. For example, constant supply to an underfloor heating system and a radiator system that is controlled by room and outdoor sensors.

Scope of delivery:

Art. No. 12 15 01

Thermomatic EC Home, complete with room sensor

Art. No. 12 15 02

Thermomatic EC Home WL, complete with wireless room sensor

Art. No. 12 15 05

Thermomatic EC Home 2K, expansion package for two circuits

Art. No. 12 15 06

Thermomatic EC Home 2K WL, wireless expansion package for two circuits

Accessories::

Art. No. 12 70 01

Outdoor sensor for EC Home, incl. 25 m 2-wire cable

Art. No. 12 70 02

Passive room sensor for EC Home, incl. 25 m 2-wire cable

Art. No. 12 70 03

Relay box for EC Home

Art. No. 12 70 04

Wireless room sensor for EC Home, incl. antenna