

LADDOMAT® 21-Series

Thermal charging and boiler protection unit



Laddomat 21-60

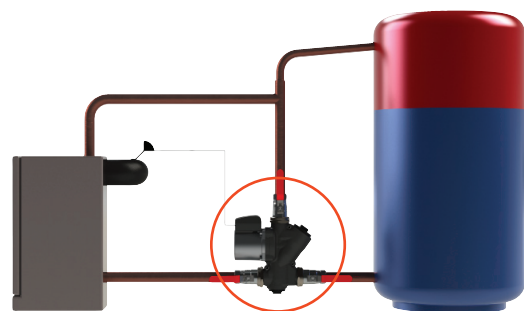


Laddomat 21-100

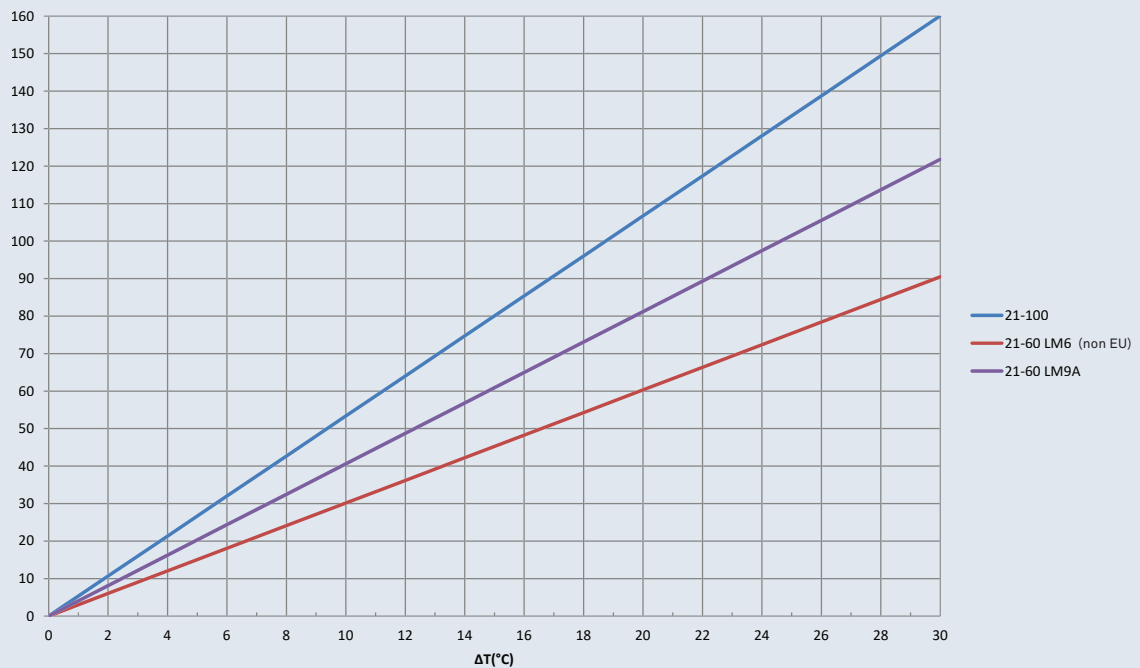
Laddomat 21 is a complete unit and is simple to install. It ensures perfect charging of the tank. Thanks to efficient hot water control, Laddomat 21 has a higher opening temperature at high boiler output compared to other similar products.

- Laddomat 21 enables the boiler to attain the right working temperature quickly and then charges with a slow flow and a high and even temperature. The vitally important boundary layer between hot and cold water is therefore optimal.
- Laddomat 21 raises the return temperature to the bottom of the boiler. This prevents corrosion and tar formation, which extends the service life of the boiler significantly.
- During the final part of firing, Laddomat 21 charges the storage tank fully, thanks to the unique thermal valve, which closes the bypass port completely.
- After firing, Laddomat 21 makes use of the residual heat in the boiler and transfer it by the self-circulation of hot water from the top of the boiler into the storage tank. Even in the event of a power failure.

- Laddomat 21 has a simple construction with generous sealing surfaces, for easy fitting.
- Laddomat 21 is manufactured for maximum service life and problem free function.
- Laddomat 21 is extremely easy to service, thanks to its ball valves with interchangeable Teflon pack box and lever in metal. This means that maintenance can be carried out easily without draining the system.
- The ball valves have extra large openings to cope with the maximum flow demand at the end of the charging period and during self-circulation.
- EPP insulation is standard.



Laddomat 21-60 located between the boiler and the tank.



ΔT=Temperature difference in/out of boiler

Technical data 21-60

Opening temperature: 53°, 57°, 63°, 66°, 72°, 78°, 83° or 87°C
 Pump: 6 m (non EU) (max 60 kW)
 9 m ErP (max 80 kW)
 Connection: Cu28
 R32
 R40 adapter kit
 R50 adapter kit
 Max. boiler output: **80 kW** (see diagram above)



Technical data 21-100

Opening temperature: 53°, 57°, 63°, 66°, 72°, 78°, 83° or 87°C
 Pump: 7 m (non EU)
 7,5 m ErP
 Connection: R32
 R40 adapter kit
 R50 adapter kit
 Max. boiler output: **120 kW** (see diagram above)

